

This is how we Learn and Live!

SCHOOL NEWSLETTER • 15 August 2018 • TERM 3 WEEK 4



Calendar Dates

Term 3	
Week 4	Science Week - Game Changers and Change Makers
15 August	Science Week in-class experiments
16 August	Ridges Choir Rehearsal @ RPS
17 August	11.40am Stage 3 Assembly 5B 2.00pm Stage 2 Assembly 3M
Week 5	Book Week - Find your Treasure
20 August	Kindergarten Bedtime stories
21 August	Kindergarten Bedtime stories
22 August	P&C meeting 9am – School Hall Parliament
23 August	Book Week Author Visits and Dress up as Favourite Character
24 August	No PSSA – Ridges Zone Athletics Carnival 11.30am ES1 Assembly KS 2.00pm Stage 1 Assembly 1H
Week 6	
27 August	Father's Day stall
28 August	Stage 2 Excursion classes – 3B, 3/4C, 3/4T, 4B, 4D and 2/6M
29 August	Stage 2 Excursion classes – 3K, 3J, 3E, 4RC and 4W Father's Day Stall
31 August	Jersey Day Fundraiser No PSSA – Ridges Zone Athletics Carnival 2.00pm Stage 2 3J

This is how we Learn and Live!

SCHOOL NEWSLETTER • 15 August 2018 • TERM 3 WEEK 4



PRINCIPAL'S REPORT

Education Week Celebrations

Wow, what a wonderful week of celebrations! It was lovely to see so many parents and family members join in our open classroom activities. I thoroughly enjoyed visiting the classrooms and observing the students proudly showing off their school and work to their families. We are all continually amazed to see how the school has evolved over a short period of time. It is hard to believe that we have only been open for three and half years! Riverbank is a wonderful supportive community. We value working in partnership with parents, families and the community to plan and support strategies to ensure every child experiences success across all domains. Our thanks to Michelle Rowland for her Q&A session with Year 6 and to our CAPA groups for their outstanding performances at Castle Towers.



Thank you for supporting our Farmers



Our wonderful Riverbank Community spirit continued last week as we raised \$1800 for our Farmers. We have since donated the funds to 'Buy a Bale'. A big thank you to those students who contributed their own pocket money.

This is how we Learn and Live!

SCHOOL NEWSLETTER • 15 August 2018 • TERM 3 WEEK 4



Book Week

Each year across Australia, the Children's Book Council of Australia brings children and books together celebrating CBCA Book Week. During this time schools, libraries, booksellers, authors, illustrators and children celebrate Australian children's literature. This year's theme is ***Find Your Treasure***. Next Thursday 23 August, we welcome authors Yvette Poshoglian and Tim Harris. Students are also requested to dress up as their favourite Book Characters. This year we are introducing Kindergarten Bedtime Stories. Students in Kindergarten are invited to visit the library on either Monday 20 August or Tuesday 21 August from 6.30pm. Please refer to information in our newsletter. Notes have been sent home informing parents on how they can register their child for an evening of Bedtime Stories.

The Hills Public Speaking Semi Finals

On Tuesday 28 August, Riverbank will be hosting The Hills Public Speaking Semi Finals. Congratulations to Mariam, Mahi, Risha, Nethra, Cameron and Dhyana on representing RPS! We wish you all the very best.

Year 5 Camp

Our Year 5 students will be heading off to Broken Bay on Monday 24 September. Broken Bay is located sixty minutes north of Sydney with access by boat only and provides a range of services, facilities and accommodation for school camps. The property is set on 650 hectares of unspoilt wilderness and feels worlds away with its isolated headland, beach, river and bush setting and breathtaking views of the Hawkesbury. Year 5 will certainly be in for a memorable experience. Final payments are due by 5 September.

P&C Meeting Discussion around new school times for 2019 8.45am to 2.45am

Next Wednesday 22 August at 9am, we will be discussing the proposal of new school times for 2019. We can all agree that due to significant growth across Riverbank PS and The Ponds HS the combined school collection time of 3pm is becoming extremely hectic. Riverbank PS would like to commence a consultation period with the community, about altering our school times to 8.45am until 2.45pm. Please come along to the meeting, as further discussions will occur regarding this proposal.

This is how we Learn and Live!

SCHOOL NEWSLETTER • 15 August 2018 • TERM 3 WEEK 4



Premier's Spelling Bee Final

On Thursday 6 September, our Spelling Bee finalists will be off to Cherrybrook PS for the Final rounds of the competition. Good luck to our competitors; Anshul, Arnav, Manav and Jaskirit.

YEAR 6 Debating Team

Congratulations to our Year 6 debating team, Michael T, Yana A, Karan R and Zeynep U on being undefeated and representing Riverbank at the regional finals.

Year 5 Debating Team

Today our Year 5 debating team comprising of Zainab, Emel, Krish and James travelled to Kurmond Public School and debated the topic 'Children should be made to do 2 hours of community service each week'. They were the negative side and whilst they put forth some convincing arguments, they unfortunately lost on the day.

Have a lovely fortnight.

Jeanie Brown
Principal



This is how we Learn and Live!

SCHOOL NEWSLETTER • 15 August 2018 • TERM 3 WEEK 4



REPORT FROM OUR DEPUTY PRINCIPALS

Safety around our School

A 'Kiss and Ride Zone' or 'Drop-off and Pick-up' area utilises existing 'No Parking' zones around schools. In these areas, drivers may stop to drop off or pick up children, however, No Parking rules apply:

- Maximum stop time is 2 minutes
- Driver must remain in or within 3 metres of the vehicle
- Vehicle must not be left unattended.

Additional safety tips for school zones:

- Always drop-off or pick-up your child from the designated area, following the school's procedures
- Make sure children use the footpath-side door when getting in and out of a car
- Make sure the hand brake is applied when the vehicle is stationary
- Never double park
- Never park across a pedestrian crossing
- Never undertake a U-turn in close proximity to the school.

Safety Tips for Students

- Stay buckled up until the vehicle has stopped in the 'Drop-off and Pick-up' area
- Make sure your school bag and other items are in a safe position, e.g. on the floor
- Be ready to get out of the car with your belongings when the car has stopped and you have unbuckled your seatbelt
- Always get in and out of the backseat of the vehicle through the safety door - the rear footpath-side door

Tell Them From Me Surveys

Our school, like many other public schools in the state, will participate in a Department of Education initiative: the Tell Them From Me student feedback survey. The survey measures factors that are known to affect academic achievement and other student outcomes. The focus of the NSW-wide survey is on student wellbeing, engagement and effective teaching practices.

You may remember that our students in Years 4-6 participated in a Tell Them From Me student survey in Term 1 this year. Asking students to complete the survey twice in one year allows us to identify trends in student responses as well as track engagement and motivation across the school year.

This is how we Learn and Live!

SCHOOL NEWSLETTER • 15 August 2018 • TERM 3 WEEK 4



The survey is a great opportunity for our students to provide us with valuable and timely feedback on what they think about school life, how engaged they are at school and the different ways that teachers interact with them. Schools in Australia and around the world have used the Tell Them From Me survey to help improve how they do things at school.

We would like to assure you that the survey is confidential. The survey is conducted online and will typically take less than 30 minutes to complete. It will be administered during school hours between 27 August and 26 October. Participating in the survey is entirely voluntary.

A consent form and FAQs for parents/carers about the survey will be sent home with students shortly. If you do not want your child or children to participate, please return the form to school by Friday 24 August. Our school will also be participating in the Partners in Learning parent survey, another part of the Tell Them From Me suite of surveys on student engagement. The survey asks parents and carers questions about different factors that are known to impact on student wellbeing and engagement.

Running this survey will help our school understand parents' and carers' perspectives on their child's experience at school. These include: communication between parents/carers and staff, activities and practices at home and parent/carer views on the school's support of learning and behaviour. This valuable feedback will help our school make practical improvements.

The survey is conducted entirely online on smartphones, iPads, tablets, laptops or computers. The survey will typically take 15 minutes or less to complete and is completely confidential. The parent survey will be conducted between late August and October. Although participating in the survey is entirely voluntary, your responses are very much appreciated. We will be attaching the link to the next newsletter once the survey becomes available.

Mrs Baker and Mr Rimmer

This is how we Learn and Live!

SCHOOL NEWSLETTER • 15 August 2018 • TERM 3 WEEK 4



Restorative Practices

Restorative Practices form the relational basis for Quality Teaching and Learning at Riverbank Public School. Our Restorative Practice Framework, because of its explicit nature, offers a common language and practice capable of fostering healthy relationships.

Student achievement is enhanced through Restorative values being embedded as a way of being and learning together. Our approach fosters individual responsibility and helps develop empathy. Inappropriate behaviour or choices and mistakes can be viewed as an opportunity for insight, learning and development in both the academic and social domains.

The explicit framework is inextricably linked to the Quality Teaching Framework and includes the following sets of questions to be asked by children, teachers and parents.

When Things Go Wrong.....When Someone Has Been Hurt

- What happened?
- What were you thinking of at the time?
- What have you thought about since?
- Who has been affected by what you have done? In what way?
- What do you think you may do to make things right?
- What did you think when you realised what happened?
- What impact has this incident had on you and others?
- What has been the hardest thing for you?
- What do you think needs to happen to make things right?

The process is empowering as it takes students from the past to the present and gives them hope for the future. It empowers them to make things right and heal any harm that has been done.

A restorative classroom setting is one that values dialogue through an inclusive approach where everyone expects to be heard and through this participatory process, students develop the capacity to learn that emotions are an important and legitimate expression of healthy dialogue. This process helps students to deal with conflict, tensions and difference in respectful ways that engender trust and foster healthy relationships.

This is how we Learn and Live!

SCHOOL NEWSLETTER • 15 August 2018 • TERM 3 WEEK 4



School Motto

The school's motto, 'Learning to Live, Living to Learn', reinforces a broad and enriching curriculum, which not only focuses on the development of literacy and numeracy skills but also on the social and emotional wellbeing of the students whilst respecting a culturally diverse community.

Riverbank Public School Code of Behaviour

- We share the voice space by listening actively to others and expressing ourselves confidently.
- We follow instructions by being in the right place, at the right time, doing the right thing.
- We use build-ups by saying encouraging, affirming things to others.
- We keep our hands, feet and objects to ourselves so that everyone is safe.
- We own our own behaviour because we choose how we behave.

Our Help Increase the Peace (HIP) Keys – School Rules:

Our school values will incorporate the 'Help Increase the Peace Keys' to promote a harmonious, nurturing and challenging living and learning environment.

The HIP program offers a whole school approach to building relationships through communication, co-operation, trust building and conflict resolution.

YELLOW KEY

Care for Others

GREEN KEY

Think Before Reacting

BLUE KEY

Respect Yourself

RED KEY

Work Together for a Non Violent Way

BLACK KEY

Expect the Best



This is how we Learn and Live!

SCHOOL NEWSLETTER • 15 August 2018 • TERM 3 WEEK 4



Congratulations to our Term 3 Week 2 Stage 2 Merit Awards recipients

<u>Class</u>	<u>Class</u>
3B – Laya, Yuvraj, Arin	3/4C – Siddh, Liam, Sufia, David
3E – Ganya, Arina, Kuila	3/4T – Dayaanand, Angelina, Nelson
3K – Angel, Dev, Jackson	4B – Ojas, Tegambir, Manish
3M – Manaal, Miguel, Ayaan	4D – Jasleen, Josh, Azaan

Congratulations to our Term 3 Week 3 K- 2 Merit Awards recipients

<u>Class</u>	<u>Class</u>
KCH – Tori-Lee, Amitoj	1F – Oneth, Rohan
KG – Aalok, Ritika	1H – Daniel, Anita
KH – Byron, Zohaib	1JK – Taqee, Piya
KJ – Mason, Dorothy	1K – Aydan, Jiya
KL – Ojal, Sukjot	1S – Rohan
KM – Anay, Alyssa	2B – Angelina, Atharv
KR – Mustafa, Akshetha	2D – Vishruth, Dehara
KS – Vyaan, Harmehar	2F – Dhoon, Jiya
KTM – Jia, Aryan	2K – Levi, Sheani
KW – Kiara, Diksha	2M – Linda, Vihaan
1/2B – Mason, Thalia	2MD – Ayaan, Sienna
1/2G – Poppy, Aryan	1-3G - Cosmo
1/2WM – Kody, Sanvi	1/2C – Kangna, Wilson

This is how we Learn and Live!

SCHOOL NEWSLETTER • 15 August 2018 • TERM 3 WEEK 4



RPS Sport Update

Ridges Zone Athletics Carnival

Good luck to our 55 students who will be representing Riverbank PS at the Ridges Zone Athletics Carnival on Friday 24 August. We wish them the best of luck and look forward to hearing about their results.

PSSA

It has been a competitive and enjoyable Winter PSSA competition, with great weather throughout the season. The final round of Winter PSSA will take place on 31 August. After this date, please ensure your student washes and returns their PSSA jersey to their team's coach.

The remainder of the Summer PSSA season which began in Term 1, will commence 14 September.

PSSA

Week 1 Round 9

Newcombe Ball

Riverbank PS vs Schofields PS

Girls	Won	Team Player – Swathi	Best and Fairest – Areebah
Boys	Won	Team Player – Rohan	Best and Fairest – Parirk

What better way to kick off the second part of our Winter PSSA season, than to celebrate a double win this week! Both Newcombe Ball teams braved the cold and played fantastic games against Schofields Public School. Both of our teams gave it their best, and successfully came home with a win!

Soccer - Boys

Riverbank PS vs Schofields PS

Juniors	Lost 0-1	Team Player – Oliver	Best and Fairest – Lachlan
Seniors	Won 4-0	Team Player – Kaya	Best and Fairest – Imran

The Junior boys played extremely well with a solid defence. Everyone was working together well the whole game. Unfortunately, with a minute to play and a lucky counter attack the opposition made the most of their opportunities. Better luck next time.

This is how we Learn and Live!

SCHOOL NEWSLETTER • 15 August 2018 • TERM 3 WEEK 4



The Seniors boys played well moving the ball around and having fun in the process. They managed to score three spectacular goals in the first half and one in the second. They displayed excellent sportsmanship on the day. Well done to both teams.

Soccer - Girls

Riverbank PS vs Schofields PS

Juniors Won 2-0 Team Player – Arya Best and Fairest – Mikaela

Seniors Won 3-0 Team Player – Julianna Best and Fairest – Zainab

The girls were up against Schofield's soccer team this week, as both games were intense and played with spectacular technique. Our girls were demonstrating some fruitful results from their weekly training, as they displayed some magnificent tactics on the field. With an immensely pressuring offense, the girls from both teams were able to produce multiple opportunities to score.

The Juniors scored a goal in each half as Mikaela took the opportunities provided and produced some amazing results. The defence showed grit and perseverance whenever the ball came to their half of the field. Not a second went by where the students let the ball out of their sight!

The Seniors pushed through the first half with a single goal to start their momentum and as the game continued on, their pressure on the field only continued and grow with each minute counting down on the field. With some fantastic teamwork and keeping the ball consistently moving between each teammate, the girls were able to score two more goals in the second half of the game.

Both games were intense and an exciting match to see. Great job to both Riverbank and Schofields!

Rugby League

Riverbank PS vs Kellyville Ridge PS

Juniors Lost Team Player – Jack M Best and Fairest – Luca

Seniors Lost Team Player – Jai Best and Fairest – Krishiv

It is pleasing to see individual improvement as well as improved play as a team. Both teams were focusing on their tackling and tight defence this week. Some great efforts and try-saving tackles were made. While we did not get the result we were looking for, some very exciting football was displayed during the matches. Keep your heads up and keep training hard!

This is how we Learn and Live!

SCHOOL NEWSLETTER • 15 August 2018 • TERM 3 WEEK 4



Netball

Riverbank PS vs Parklea PS

Juniors Lost 5-16 Team Player – Rupali Best and Fairest – Aanya

Seniors Lost 1-32 Team Player – Nikki Best and Fairest – Chaahat

Our teams had a great week in PSSA. We made goals for each game and tried our best to reach those targets. Our focus has been on defence and making interceptions, as well as practicing how to make those tough goals. Our seniors and juniors implemented some of the strategies we've been working on during PSSA practice but faced tough Parklea teams. Well done everyone!

Week 2 Round 10

Newcombe Ball

Riverbank PS vs Parklea PS

Girls Won Team Player – Rajvir Best and Fairest – Marvin

Boys Lost Team Player – Jaskirit Best and Fairest – Kathleen

What another awesome week of Newcombe ball! It was so lovely to be able to verse Parklea again. This week the boys were able to come home with another win, and the girls played 3 very close sets but were unable to beat the strong Parklea girls team. We are very excited to play again in week 4!

Soccer - Boys

Riverbank PS vs Ironbark Ridge PS

Juniors Lost 0-3 Team Player – Chris Best and Fairest – Dhruv

Seniors Lost 0-2 Team Player – Chris Best and Fairest – Gurjot

Juniors Wow! What an excellent first half against a great team. All the boys held their positions well and passed the ball around. Unfortunately, we could not score due to some excellent keeping from our opposition. In the second half, the other team were just too strong and managed to score a few goals.

Seniors moved the ball around like a professional team, not allowing the other team to touch the ball for a few minutes. Unfortunately, the other team got lucky with a few opportunities and managed to score.

Well done to both teams

This is how we Learn and Live!

SCHOOL NEWSLETTER • 15 August 2018 • TERM 3 WEEK 4



Soccer - Girls

Riverbank PS vs Rouse Hill PS

Juniors Lost 0-3 Team Player – Jocelyn Best and Fairest – Sufia

Seniors Lost 0-2 Team Player – Dhun Best and Fairest – Deeya

Riverbank Girls Soccer were up against Rouse Hill this week. Our girls experienced a tough match, but they showed a strong Riverbank spirit and learnt from this experience.

Our juniors showed true grit as they persevered and never stopped believing in a comeback even though they were down by three goals in the first half. In the second half Riverbank were starting to show signs of a comeback, but unfortunately time was our enemy.

Our Seniors also showed what it meant to have strong sportsmanship and teamwork as they went up against Rouse Hill. The first half we went down by 1 goal and through multiple unfortunate attempts to score, the match ended with another goal scored by Rouse Hill in the second half ending the game with a 2-0 loss. The team showed great spirit and friendship as they congratulated the other team on such an exciting and fun match.

Keep up the great work girls!

Rugby League

Riverbank PS vs Schofields PS

Juniors Lost Team Player – Tyrell Best and Fairest – Dirok

Seniors Lost Team Player – Trei & Kael Best and Fairest – Jacob

Some very exciting passages of play this week! Players were supporting each other in tackles and calling for the ball. A special mention to Dirok who ran the length of the field to make an exceptional try-saving tackle! Well done to Jacob on scoring his first try after what was an excellent team effort by the senior team

Netball

Riverbank PS vs Kellyville Ridge PS

Juniors Lost 0-15 Team Player – Summer Best and Fairest – Tzara

Seniors Lost 1-19 Team Player – Harshaa Best and Fairest – Morgan

This round our netball players versed Kellyville Ridge PS in some very energetic games. Our key focus was defensive strategies, which we implemented into our games as best as we could. Unfortunately, we were outplayed this time but we're super keen to get back out on the court next week! Go Riverbank!

This is how we Learn and Live!

SCHOOL NEWSLETTER • 15 August 2018 • TERM 3 WEEK 4



Week 3 Round 11

Newcombe Ball

BYE

Soccer - Boys

Riverbank PS vs PS

Juniors Lost 0-1 Team Player – Koby Best and Fairest – Samuel

Seniors Won 3-1 Team Player – Everyone Best and Fairest – Everyone

A close game where the Juniors put in a solid effort. They held possession for most of the game and were close from scoring a number of times. An unfortunate goal in the second half where the ball just crossed the line fired the boys up. However, they just didn't have enough time to equal the score.

What an entertaining match from the Seniors. The 1-2 passes, reading of play, attacking, defending the boys were faultless. A few cracking goals in the process.

A wonderful effort by both teams. Only 2 games to go.

Soccer – Girls

BYE

Rugby League

Riverbank PS vs Ironbark Ridge PS

Juniors Lost Team Player – Tyrell Best and Fairest – Isaac

Seniors Lost Team Player – Jai Best and Fairest – Michael

Juniors played with a good structure and were communicating well as a team. They spread out and were making 2-3 passes during each play. It was exciting to see some of their skilful offloads and second-effort runs. Seniors played a respectful game, putting on a good display of sportsmanship and showed plenty of support for their teammates.

Netball

Riverbank PS vs Ironbark Ridge PS

Juniors Lost 0-15 Team Player – Summer Best and Fairest – Harshaa

Seniors Lost 0-30 Team Player – Nikki Best and Fairest – Tahli

This week in training, we focused on how we could best support our players on the court at the beginning of the centre pass. There were some great moments of excellent defence and we have

This is how we Learn and Live!

SCHOOL NEWSLETTER • 15 August 2018 • TERM 3 WEEK 4



improved in leaps and bounds. For next week, we will be concentrating on maintaining pace and our shooting. Looking forward to next week!

Premier's Sporting Challenge

The 2018 *NSW Premier's Sporting Challenge* has now started. The challenge is designed to help students to become involved in sport and physical activity, grow in confidence and enjoy healthier lifestyles. Over Term 3, all students will be recording physical activity completed during class time, at recess and lunch as well as during sport. Remember activities outside school hours will also count towards the challenge. We invite all our families to support us in encouraging students' healthy use of leisure time and to experience the joy of being active together.

Mr Nathan Lee
Sports Organiser

This is how we Learn and Live!

SCHOOL NEWSLETTER • 15 August 2018 • TERM 3 WEEK 4



Begum Family Day Care

Limited Vacancies Now Available! New Child Care Subsidies Available (CCS)

Registered with Little Angels FDC Scheme

Better educator to children ratio

First Aid, Anaphylaxis & Asthma Training

15 Years' Experience, Meets National Standards & Diploma trained

Registered Business with \$10,000,000 Public Liability Cover

Before / After Care & Weekend Care with snacks provided

Pick-ups / Drop-offs (Including John Palmer, Riverbank & Kellyville Ridge Public Schools)

69 Rosebrook Avenue, Kellyville Ridge NSW 2155

To Enrol or meet Begum, please text or call 0424 563 677 or email
begumfamilydaycare@gmail.com

Term Three	MONDAY	TUESDAY	WEDNESDAY	THURSDAY	FRIDAY
Week 1	23 July SDD	24 July Students return	25 July	26 July Athletics Carnival 3-6	27 July Kindy 100 days at School No Assemblies PSSA - Winter
2	30 July 3-6 NAIDOC Week Activities	31 July ICAS English 3-6 NAIDOC Week Activities	1 August OC Test K-2 NAIDOC Week Activities	2 August 3-6 NAIDOC Week Activities	3 August Assembly 3-6 PSSA - Winter 3-6 NAIDOC Week Activities
3 EDUCATION WEEK	6 August Education Week	7 August Castle Towers CAPA Performance	8 August	9 August Education Week Open Classrooms	10 August Assembly K-2 PSSA - Winter
4	13 August Science Week	14 August ICAS Maths	15 August	16 August	17 August Assembly 3-6 PSSA - Winter
5	20 August Book Week Find your Treasure	21 August	22 August Parliament P&C 9am	23 August K-6 Book Week Author Visits	24 August Assembly K-2 Ridges Athletics
6	27 August Father's Day Stall	28 August Stage 2 Excursion	29 August Stage 2 Excursion Father's Day Stall	30 August	31 August Assembly 3-6 PSSA - Winter Jersey Day Fundraiser
7	3 September Literacy and Numeracy Week	4 September	5 September	6 September	7 September Assembly K-2
8	10 September	11 September	12 September Athletics Carnival K-2	13 September	14 September Assembly 3-6 PSSA - Summer
9	17 September	18 September	19 September Parliament Sydney West Athletics	20 September Year 6 Fun Day Circus Berserkus	21 September Assembly K-2 PSSA - Summer
10	24 September Year 5 Camp	25 September Year 5 Camp	26 September Year 5 Camp	27 September	28 September Assembly 3-6 Footy Colours Day Fundraiser
Hols	1 October Labour Day	2 October	3 October	4 October	5 October
Hols	8 October	9 October	10 October	11 October	12 October



The most exciting week of the year is almost upon us...

BOOK WEEK!

Students have already been reading many of the shortlisted titles for 2018. Next week they will get to vote for their favourite.

??? Guessing competitions will be running throughout the week ???

★ Kindergarten, if you haven't already registered for our fabulous Bedtime Stories, please do so by this Friday 17th August (information flyer can be found further down) ★



THE BOOK OF THE YEAR: YOUNGER READERS
CBCA Short List 2018

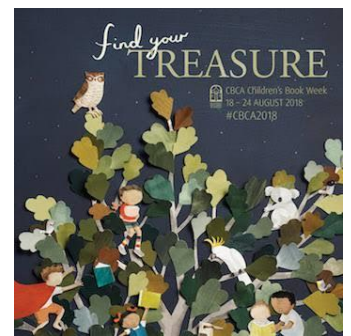
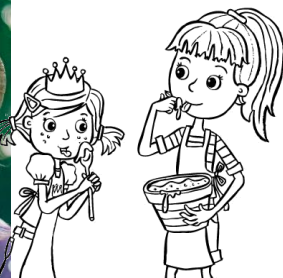


THE BOOK OF THE YEAR: PICTURE BOOK
CBCA Short List 2018



THE BOOK OF THE YEAR: EARLY CHILDHOOD
CBCA Short List 2018

Visits from Australian authors [Yvette Poshoglian](#) (K-2) and [Tim Harris](#) (3-6) on Thursday 23rd August and, of course, BOOK CHARACTER DRESS-UP DAY will be that day too. Who will you be coming as?



For more information about Book Week at #RPSlibrary please feel free to speak to any member of the team.

ENJOY THE WEEK!

Katie Whelan ~ Jennifer Kennedy ~ Anthony Dewhurst

THE LIBRARY TEAM



Off the Shelf

LIBRARY
NEWSLETTER
T3W2/2018



2018

What's happening at #RPSlibrary?

GUESSING COMPETITIONS

Bedtime stories for Kindergarten

Treasure Box of Stories

K-2 Author Visit



Yvette Poshoglian

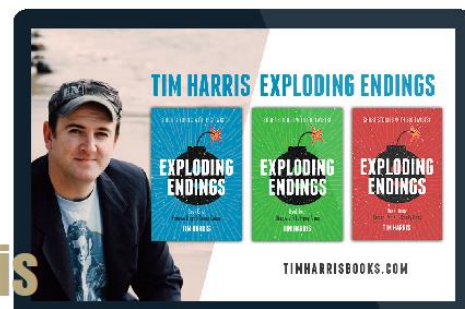
Author of the popular 'Ella and Olivia' series



BOOK CHARACTER DRESS-UP DAY

3-6 AUTHOR VISIT

Tim Harris



Book Week at #RPSlibrary

#CBCA2018

Katie Whelan ~ Jennifer Kennedy ~ Anthony Dewhurst

THE LIBRARY TEAM



Off the Shelf

LIBRARY
NEWSLETTER
T3W2/2018

What's New?

Premier's Reading Challenge

CHALLENGE CLOSES THIS MONTH! All records must be entered online by Friday 31st August.

NB: K-2 students/parents, this will be done for you by the library

Since our last newsletter, these students have completed the K-2, 3-4 and 5-6 Challenges:

Ahaan M.	Maanvi D.	Debanshi P.		
Aaina M.	Aryan S.	Zoe C.	Lily T.	Marika J.
Aanya G.	Raghav K.	Emily Q.	Anushka S.	Kathleen D.

Great readers make awesome leaders!

CIRCULATION

OVERDUE BOOKS Unfortunately, many library books are still listed as overdue. PLEASE help us to ensure that all students have equitable access to our books by returning what is borrowed. If books are lost or damaged, please contact the school office or the library directly to arrange for the replacement cost to be paid. Thank you.

BOOK CLUB

ISSUE 5 is now closed. Orders will be distributed to students within the coming fortnight. Don't forget, all purchases help us buy more resources for our library. Thanks for supporting this fabulous program.

Please remember that ALL Book Club purchases must be made through the LOOP system or online payment system. Download the LOOP app to your phone via your App Store.

**CASH ORDERS
WILL NOT BE ACCEPTED**

Introducing

SCHOLASTIC

Book Clubs LOOP
for Parents

LOOP is the **NEW** Scholastic Book Clubs
Linked Online Ordering & Payment platform for parents.
To order and pay for Scholastic Book Clubs by credit card visit:
www.scholastic.com.au/LOOP

Now available for your iPad or iPhone

Katie Whelan ~ Jennifer Kennedy ~ Anthony Dewhurst

THE LIBRARY TEAM



Off the Shelf

LIBRARY
NEWSLETTER
T3W2/2018

TEACHING & LEARNING RESOURCES

Stage 2 students...don't forget check out the awesome resources available on Oliver (via the Student Portal) for your project this term.

If you have forgotten how to get there, please ask your teacher or any member of the library team.

Google can
bring you back
100,000
answers,
a librarian
can bring you back
the **right**
one.
– Neil Gaiman

Katie Whelan ~ Jennifer Kennedy ~ Anthony Dewhurst

THE LIBRARY TEAM



CBCA Children's Book Week
18 - 24 AUGUST 2018

find your TREASURE

#CBCA2018

K-2 Author Visit



Yvette Poshoglian

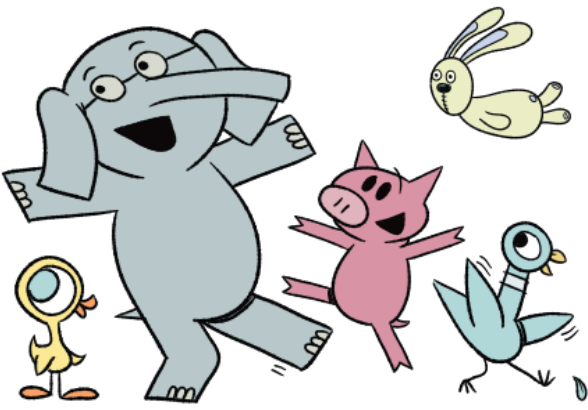
Author of the
popular
'Ella and
Olivia' series



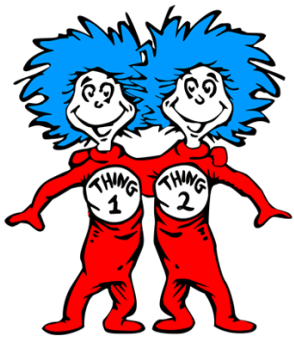
Thursday 23rd August

Dress-up Day

Author Visits



Which book character will you be?



3-6 AUTHOR VISIT

**Tim
Harris**



Book Week at #RPSlibrary

#CBCA2018



KINDERGARTEN BEDTIME STORIES

In celebration of Book Week and our love of reading, we invite all Kindergarten students to share in a unique reading experience...

Everyone loves a bedtime story but have you ever had your bedtime story read to you at school?

In the library?? At night?? In your pyjamas!?!?

Well, this is your chance!

Check your inbox for more details and on the reverse of this page.

Please read this IMPORTANT INFORMATION:

- You must register for this event by booking through the link provided in your email invitation or by scanning the QR code on the attached flyer.
- Only **ONE** ticket is allowed per child (this includes their accompanying adult)
- Select and register for **ONE NIGHT** only
- **NO** siblings can be admitted (due to space restrictions)
- **NO** food or drinks will be permitted

Monday 20th August
Tuesday 21st August
6:30 – 7:15pm

BOOK WEEK 2018
FIND YOUR TREASURE

Kindergarten

**BEDTIME
STORIES**

#RPSLIBRARY



Scan the QR code to book
your preferred date NOW!

Bookings close Friday 17th August
**CHECK YOUR INBOX FOR MORE INFO*

CBCA Children's Book Week
18 - 24 AUGUST 2018

Find your TREASURE

#CBCA2018



K-2 Author Visit

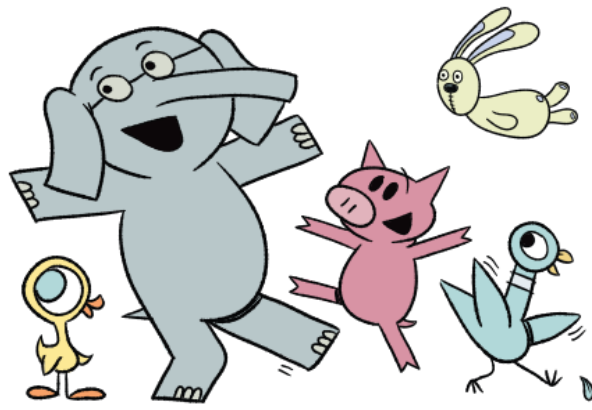


Thursday 23rd August



Yvette Poshoglian

Author of the popular 'Ella and Olivia' series

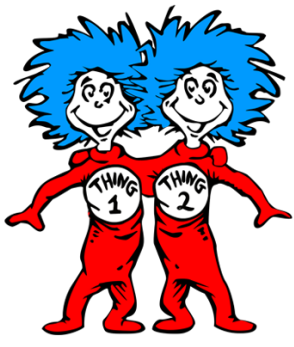


Dress-up Day

Author Visits



Which book character will you be?



3-6 AUTHOR VISIT



Tim Harris



Book Week at #RPSlibrary



#CBCA2018

Creative Arts

at Riverbank



Castle Towers Performance

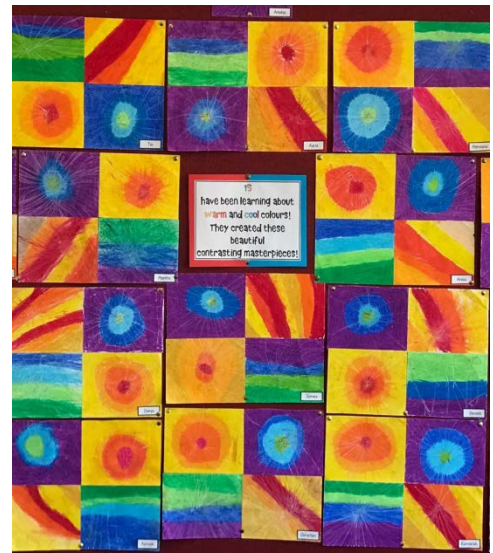
We are so proud of our wonderful CAPA groups that performed at Castle Towers last week for Education Week. The senior and junior choirs sang beautifully and the Kindergarten and Year 2 dance groups looked wonderful dancing in their bright costumes!

We are very thankful to all the parents and community members that came to watch and support our students.



What's happening in 1C

Stage 1 has been mixed together (secondary mixed together). 1C has been based on warm and cool colours. They have also been learning about technique and colour, using white oil pastel to drag the colours through each layer from the centre to the outside edge. They really have brightened up our foyer this week!



NAPLAN Online fact sheet for parents and carers

From 2018 NAPLAN tests will begin changing from pencil and paper to online testing. The move to NAPLAN Online will bring new benefits for teachers and students.

Why are schools moving to NAPLAN Online?

Significant planning, research and trialling has been ongoing since 2012 to support the move to NAPLAN Online. Online testing creates new opportunities for teachers and students that are not possible with pencil and paper tests.

What are the benefits of NAPLAN Online?

- NAPLAN Online will provide better assessment, more precise results and faster turnaround of information.
- Most students find online assessment more engaging.
- NAPLAN Online will use tailored testing, which gives students questions better suited to their ability, resulting in more detailed individual assessment.
- By 2020, your child's results will be returned within weeks of the NAPLAN test, as opposed to months.
- Online assessment will reduce the time it takes to mark and provide feedback to schools and teachers.
- The precision and improved timing of the results will help teachers streamline their teaching more specifically to student needs.

Student engagement

In August and September 2017, around 2,800 NSW schools took part in the school readiness test (SRT). SRT was a 'practice run' for schools to assess their technical and administrative readiness for NAPLAN Online, and gave students an opportunity to become familiar with online testing.

Feedback from SRT shows that students are more engaged with NAPLAN Online than the current pencil and paper format:

- Of the 317,876 students who completed the test, 77% said they liked doing the test online.
- Of the 2,463 schools who completed the SRT survey:

- 90% said students were more engaged with the online combined numeracy and literacy test than the pen and paper version
- 79% said students were more engaged with the online writing test than the pen and paper version.

The NAPLAN Online website provides more information about the school readiness test: <https://education.nsw.gov.au/teaching-and-learning/student-assessment/naplan-online/school-readiness-test>

For more information

More information about the NSW transition approach to NAPLAN Online, including answers to frequently asked questions, can be found on the NSW Department of Education NAPLAN Online website: <https://education.nsw.gov.au/teaching-and-learning/student-assessment/naplan-online>

Parents wanting to familiarise themselves with the NAPLAN Online platform can visit ACARA's demonstration site, which includes sample online mini-tests for each NAPLAN year: <https://www.nap.edu.au/online-assessment/naplan-online/naplan-online-public-demonstration-site>

General questions around the NSW Department of Education's approach to the move to NAPLAN Online can be addressed to the NAPLAN Online transition team: NAPLANOnline@det.nsw.edu.au

Frequently asked questions

When will NSW schools transition to NAPLAN Online?

Education ministers have agreed to full participation in NAPLAN Online by 2020. In 2018, around 500 NSW schools will transition to NAPLAN Online.

Is NAPLAN Online compulsory?

NAPLAN Online will replace the current pencil and paper NAPLAN tests. When schools have transitioned to NAPLAN Online, all eligible students in Years 3, 5, 7 or 9 must participate, unless they are exempt or withdrawn from NAPLAN testing by parents or carers.

Will the Year 3 writing test be online?

No. At this stage, the Year 3 writing test will continue to be paper-based. All other Year 3 NAPLAN tests (numeracy, reading and language conventions) will be online.

Education ministers have requested more research about the benefits or disadvantages for Year 3 students composing text in an online environment before any future decision is made.

What is tailored testing?

NAPLAN Online uses tailored testing, where the test automatically adapts to a student's performance and asks questions that match their achievement level. This allows students to better demonstrate their knowledge and provides teachers and schools with more targeted and detailed information on students' performance. More information about tailored testing can be found on the NAPLAN Online website: <https://education.nsw.gov.au/teaching-and-learning/student-assessment/naplan-online/whats-changing/tailored-tests>

How will NAPLAN Online tests be marked?

Automated marking is currently used in the pencil and paper NAPLAN test to mark numeracy, reading and conventions of language and will remain in use for NAPLAN Online.

Trained markers will mark student writing as is currently the case with pencil and paper tests. Automated essay scoring will not be used to mark NAPLAN Online writing tests.

Will students' personal information be safe?

Yes. Information about your child is treated confidentially and held securely to ensure that every student's right to privacy is maintained. The NAPLAN Online platform has been built with state-of-the-art security features that comply with national data security policies and data encryption standards.

How will parents receive their child's NAPLAN Online results?

Printed individual student reports will be sent to parents and carers by the NSW Education Standards Authority, as they currently are with pencil and paper NAPLAN tests. Once all NSW schools have transitioned to NAPLAN Online, all individual student reports will be returned to parents within weeks of the completion of the NAPLAN test window.

What if my child's school is not participating in NAPLAN Online in 2018?

Pencil and paper tests will be undertaken by schools that are not moving to NAPLAN Online in 2018. These will take place at the same time as NAPLAN Online, but within the current paper-based test window period of three days, as opposed to nine days for NAPLAN Online.

NAPLAN paper-based and online tests assess the same skills in literacy and numeracy taught through Australian curriculum content. Whether they complete the pencil and paper or online test, students will answer the same number of test questions and their results will be measured and reported against the one NAPLAN assessment scale.

Will NAPLAN Online be accessible to students with disability?

Yes, for most students. The accessibility adjustments provided in NAPLAN Online for students with disability will be equivalent to what is currently provided in pencil and paper NAPLAN tests in most instances.

ACARA will provide new adjustments for NAPLAN Online, such as alternative items for students with visual, hearing or motor disabilities. Students requiring braille, or print larger than what the NAPLAN Online platform or assistive technology can provide, will sit pencil and paper tests.

Do students need headphones or earphones to complete NAPLAN Online?

Yes. Headphones or earphones are required for each student to complete NAPLAN Online, as some questions include audio. For example, the spelling test includes audio delivery of words that students are required to type in.

Schools will be responsible for ensuring that all students have the appropriate headphones or earphones to complete NAPLAN Online.

Can students use their own devices to complete NAPLAN Online?

Yes, however it will be at the discretion of the individual school. Each device will require the installation of a locked down browser application, which prevents students from accessing unauthorised websites, applications and spellcheck features.

The ACARA website has more information on technical requirements for NAPLAN Online: <http://www.nap.edu.au/online-assessment/naplan-online/technical-requirements>

What happens if a computer experiences issues during a test session?

No student is disadvantaged if their device stops working during the NAPLAN Online test. In the case of interruptions, tests can be paused and resumed as required with no time lost. If a device stops working, all responses will be saved and the student can complete their test in a rescheduled test session.

Who is responsible for administering the NAPLAN tests?

The NSW Education Standards Authority (NESA) is the test administration authority responsible for the administration and delivery of NAPLAN tests in NSW, including pencil and paper test and NAPLAN Online.

Who is ACARA?

The Australian Curriculum, Assessment and Reporting Authority (ACARA) is an independent statutory authority responsible for the development of national curriculum, and the administration of national assessments and associated reporting on schooling in Australia.



Tell Them From Me parent survey Frequently Asked Questions

Centre for Education Statistics and Evaluation

1. What is the Partners in Learning parent survey?

The Partners in Learning parent survey is part of the *Tell Them From Me* suite of surveys on student engagement. The parent survey helps to clarify and strengthen the important relationship between parent and school.

The parent survey is anonymous. It can be used either as a one-off survey or to identify trends within schools over time and better inform school priorities. The survey is held once a year (Term 3/4), and is run at the same time as the Focus on Learning teacher survey and the second optional student survey.

Over 960 schools in NSW participated in the 2017 parent survey.

2. What are the benefits for my school?

The parent survey provides school principals and school leaders with parents' perspectives on their school as well as learning at home. Communication between parents and staff, activities and practices at home, and parent views on the school's support of learning and behaviour help build an accurate and timely picture that schools can use for practical improvements.

Data reports are provided to school leaders within three business days of the survey closing. Schools will be able to access a 'one click' PDF summary report of their school's results. A summary 'radar' chart shows your school's average scores on a ten-point scale for eight measures. The report also shows the distribution of answers for each measure which allows school leaders to target specific issues. Your school's results will be compared against state-wide averages.

3. How does this survey relate to the school planning cycle?

The *Tell Them From Me* student, parent and teacher surveys provide valid and reliable data to help schools during the 2018-2020 planning cycle, including with the annual review of strategic directions, development of improvement measures and milestones, self-assessment against the School Excellence Framework and preparation of the annual school report.

The survey data can help schools:

- understand parents' perspectives on their children's experience at school, including teaching, communication and the school's support of learning and behaviour
- understand parents' perspectives on activities and practices at home related to their children's learning
- provide evidence of areas of strength to support self-assessment and reporting
- engage the school community in discussions to identify strategic directions for school improvement
- establish quantitative improvement measures and help schools track achievement against them.

4. How are these surveys different from existing departmental surveys on the School Survey System?

Schools have access to national and Departmental surveys of students, parents and teachers through the School Survey System. The *Tell Them From Me* suite of student, parent and teacher surveys incorporate many of the same topics and have similarly worded questions. However, they also:

- include a number of different measures
- bring student, teachers and parent surveys together in a single reporting tool
- will include data collected over multiple years
- enable comparison with state averages.

5. How will the student, parent and teacher surveys assist the department to support better student outcomes?

The department is committed to using data, evidence and evaluation to inform its planning and practice. The survey data allows the department, through the Centre for Education Statistics and Evaluation (CESE), to analyse results at a state-wide system level as well as in comparison with other data sources, to understand better the impact of parent and student engagement, wellbeing and teaching practices on student outcomes.

6. What kind of questions will the parent survey ask?

The survey questions aim to understand parents' perspectives on their child's experience at school, including teaching, communication and the school's support of learning and behaviour. The survey also helps schools understand parents' perspectives on activities and practices at home related to their child's learning.

Schools will also have the option to include their own custom questions in closed and open-ended formats. Individual responses to the open-ended questions will not be passed on to CESE researchers.

The survey questions relate to the following drivers of student engagement:

Parents feel welcome	Parents are informed	Parents support learning at home
School supports positive behaviour	Safety	Inclusion
Communication preferences	Parents' participation at school	School supports learning

7. How does my school participate in the surveys?

CESE has invited expressions of interest from all schools for the 2018 surveys. To participate in the parent survey, schools must also participate in the student survey. Some exceptions do apply to schools in special circumstances, such as infants schools and schools for specific purposes (SSP schools).

8. How many parents at my school can take part?

All parents are encouraged to take the survey. CESE will provide schools with advice on different ways to engage parents.

Parents can complete a different survey for each child they have at the school if they wish.

9. What is the cost to my school?

The surveys are provided free of charge to schools. In return, schools are asked to encourage as many parents as possible to complete the survey. CESE may also ask schools to take part in a feedback questionnaire once the surveys have finished.

10. How will the survey be conducted?

The survey is conducted entirely online at home or on public computers, during the specific survey window. For 2018, this will take place during Term 3/4. The survey will take around 15 minutes.

11. How will parent anonymity be ensured?

To protect parent anonymity, schools will create a unique URL that will allow access to the survey for their school only. The school will distribute this unique URL to parents, generally via the school newsletter. Data suppression rules are applied to the school reporting tools where there are fewer than five responses.

12. Will support be available to schools during the survey period?

Schools will have access to technical support provided by *The Learning Bar*, the company that has been contracted to supply the surveys for the department. A free-call telephone number and email address will be provided to participating schools. Support will be available every day during term time between 8.30am and 4.30pm, before, during and after active survey periods.

13. Will training be available to school coordinators?

Online live training and information webinars will be offered to all schools. All school coordinators and principals are encouraged to attend one of these training sessions prior to the survey window. There will also be additional webinars offered during and at the end of the survey period providing information about how to interpret the reports and analyse the data provided by the surveys. Recordings of the training webinars are available in the *Tell Them From Me* online portal in the 'Knowledge Base' tab, under 'My Resources'.

14. Can I see the survey questions?

Schools will be able to view the surveys online via a password protected portal once they have formally committed to undertaking the surveys. The questions in PDF form are available for participating schools. Please note that the survey questions are the intellectual property of *The Learning Bar* and must not be distributed beyond your school or used in any manner other than that stipulated by the department.

15. How does the parent survey relate to the student and teacher surveys?

CESE is offering the full suite of *Tell Them From Me* surveys (student, parent and teacher surveys) to ensure schools can capture the views of students, teachers and parents. The surveys are complementary.

For more detail on each of the surveys, see the survey website: <http://surveys.cese.nsw.gov.au/>

16. Will the surveys all take place at the same time?

The student survey will take place in Term 1 and (optionally) Term 3/4. The parent and teacher surveys will take place at the same time as the second student survey in Term 3/4.

17. Can our school do one of the surveys and not the others?

Schools can take part in the Term 1 student survey without taking part in either the teacher or parent surveys. However, we ask that schools commit to do the student survey to be able to run the parent and/or teacher survey. Some exceptions do apply to schools in special circumstances, such as infants schools and schools for specific purposes (SSP schools). The parent and teacher surveys are designed to complement the student survey.

18. My school is small. Will the survey work for me?

To protect student and parent confidentiality, data suppression rules do apply where fewer than five parents answer a question. This may limit the capacity of small schools to drill down into their data.

Small schools can choose to cluster together, allowing them to pool data. Clustering is completely optional. To form a cluster, all schools involved must agree. If schools form a cluster this will mean that these schools receive a report that shows the combined data from all the schools in that particular cluster. These schools will also receive their individual school report if enough data has been collected to protect student and parent confidentiality.

Please indicate whether you would like to be part of a school cluster when lodging your expression of interest.

19. Can infants schools, SSP schools or other schools with special circumstances participate?

Infants schools can take part in the parent survey, even though the student survey is only suitable for students in Years 4 to 12. SSP schools and other schools with special circumstances may do the parent and/or teacher surveys without doing the student survey after first enquiring with CESE.

20. Will the parent survey be available in languages other than English?

Yes. The parent survey is available in 23 languages including: Arabic, Chinese - simplified, Chinese - traditional, English, Filipino, Greek, Italian, Karen, Khmer, Korean, Persian, Polish, Portuguese, Punjabi, Russian, Somali, Spanish, Tamil, Thai, Turkish, Ukrainian, Urdu and Vietnamese.

21. Who will be able to see my school's data?

Schools will be able to see their own aggregated data. They will not see individual parent responses.

CESE researchers will have access to anonymous survey response data for system-wide analysis. The researchers are interested in trends only, not individual responses. CESE will not be able to see responses to your school's open-ended custom questions. No parent will be identified in any publication. No school will be identified unless they have given permission.

As with other departmental data, your Director, Public Schools and selected policy staff from State Office may view your school's report.

Schools are encouraged to use the data as part of their ongoing community and stakeholder discussion.

22. What will happen next for schools that choose to participate in the parent survey?

Early Term 3	Training for school principals and coordinators in using the survey website conducted by webinar. Helpdesk support will be available. Schools setup their surveys and create a unique URL for their school for distribution to parents.
Mid-Term 3 – beginning of Term 4	Active period for surveys. Helpdesk support will continue to be available. Training for school principals and coordinators in using the survey website continues to be conducted by webinar. Schools receive their reports three days after closing their survey. Training for school principals and coordinators in analysing school survey results conducted by webinar.

What is CESE?

The Centre for Education Statistics and Evaluation (CESE) is part of the NSW Department of Education.

CESE has been established to improve the effectiveness, efficiency and accountability of education in New South Wales.

CESE identifies and shares what works, creating new opportunities to improve teaching and learning across all of education.

More information about CESE is available at: www.cese.nsw.gov.au

What is *The Learning Bar*?

The Learning Bar is a Canadian education company that specialises in school surveys for both primary and secondary students. Its survey, *Tell Them From Me*, is the largest national school survey in Canada, used in nine of Canada's ten provinces. More than 6,300 schools and 5.4 million students have participated in the survey. Australian schools have been participating in the *Tell Them From Me* surveys since 2012.

The Learning Bar is led by Dr J Douglas Willms. Dr Willms is the President of the International Academy of Education, a Member of the US National Academy of Education and a Fellow of the Royal Society of Canada. He recently held the Tier 1 Canada Research Chair in Literacy and Human Development for 14 years. Dr Willms has played a lead role in the development of questions for the OECD's Programme for International Student Assessment (PISA).

More information about *The Learning Bar* is available at: www.thelearningbar.com

If you have any questions about the parent survey, please contact CESE via email: TTFM@det.nsw.edu.au or by telephone: **1300 131 499**.

Tell Them From Me student survey Frequently Asked Questions

Centre for Education Statistics and Evaluation

1. What is the *Tell Them From Me* student survey?

The *Tell Them From Me* student survey is a measure of student voice that provides school principals and school leaders with insight into student engagement, wellbeing and experience of effective teaching practices at their school.

The survey is confidential and can be used either as a one-off survey or to identify trends within schools over time and better inform school priorities. The survey is held once a year, with an optional second survey within the year.

More than 157,000 students from over 385 NSW government secondary schools and 127,000 students from over 1,120 NSW government primary schools participated in the survey in 2017.

2. What are the benefits for my school?

The *Tell Them From Me* student survey provides school principals and school leaders with students' perspectives on their experiences of school and learning. This can be used to help build an accurate and timely picture to inform school planning.

Data reports are provided to school leaders within three business days of the surveys closing. Reports include: a 'one click' PDF summary report of their school's results; interactive charts which look more closely at their school results for specific groups of students (e.g. by gender or year group); thematic reports, e.g. student engagement report; and **trend reports which allow schools to track changes in results over time.**

Schools can compare their results with a replica school – a virtual school of students who have similar characteristics (year, gender and socio-economic characteristics).

3. How does this survey relate to the school planning cycle?

The *Tell Them From Me* student, parent and teacher surveys provide valid and reliable data to help schools during the 2018-2020 planning cycle, including with the annual review of strategic directions, development of improvement measures and milestones, self-assessment against the School Excellence Framework and preparation of the annual school report. The survey data can help schools:

- understand students' perspectives on critical aspects of their school experience, such as social and institutional engagement, wellbeing and exposure to quality teaching practices
- provide evidence of areas of strength to support self-assessment and reporting
- engage the school community in discussions to identify strategic directions for school improvement
- establish quantitative improvement measures and help schools track achievement against them.

4. How are these surveys different from existing departmental surveys on the School Survey System?

Schools have access to national and departmental surveys of students, parents and teachers through the School Survey System. The *Tell Them From Me* suite of student, parent and teacher surveys incorporate many of the same topics and have some similarly worded questions. However, they also:

- include a number of different measures
- bring student, teacher and parent surveys together in a single reporting tool
- will include data collected over multiple years
- enable comparison with state averages and like-for-like replica schools.



5. How will the student, parent and teacher surveys help the department support better student outcomes?

The department is committed to using data, evidence and evaluation to inform its planning and practice. The survey data allows the department, through the Centre for Education Statistics and Evaluation (CESE), to analyse and better understand student performance data and the impact of engagement, wellbeing and teaching practices on student outcomes.

6. What kind of questions will the student surveys ask?

The survey questions relate to the following measures for **primary schools**:

Participation in sports and extra-curricular activities	Behaviour at school	Effective learning time
Use of ICT for learning	Homework behaviour	Teaching relevance and rigour
Sense of belonging	Interest and motivation	Perseverance
Positive relationships	Effort	Experience of being bullied
Valuing school outcomes	Skills and learning challenge	Advocacy at school
Positive teacher-student relations	Expectations for success	Positive learning climate

The survey questions relate to the following measures for **secondary schools**:

Participation in sports and extra-curricular activities	Homework behaviour	Expectations for success
Skills and learning challenge	Academic self-concept	Behaviour at school
Experience of being bullied	Truancy	Sense of belonging
Interest and motivation	Effective learning time	Aspirations: finishing Year 12, University, TAFE
Positive relationships	Effort	Teaching relevance and rigour
Wellness	Valuing school outcomes	Positive learning climate
Academic buoyancy	Advocacy at school	Advocacy outside school
Positive teacher-student relations	Use of ICT for learning	Perseverance

Some additional questions will also be asked to gain a socio-economic status (SES) profile of students. Students do not need to answer these questions if they do not wish.

Schools will also be able to include their own custom questions in closed and open-ended format during the optional second survey. Individual responses to the open-ended questions will not be passed on to CESE researchers.

7. Which student groups will take the survey?

The primary school survey has been specifically designed for students in Years 4 to 6. The secondary school survey is designed for students in Years 7 to 12.

8. How many students can take part in the surveys?

All students in Years 4 to 6 and 7 to 12 are encouraged to take part. The more students who complete the survey, the more reliable a school's data will be.

9. What is the cost to my school?

The surveys are provided free of charge to schools. In return, schools are asked to ensure that:

- time and computers are made available to students to take the survey
- as many students as possible complete the survey.

CESE may also ask schools to take part in a feedback questionnaire once the surveys have finished.

10. How will the survey be conducted?

The survey is conducted entirely online during specific survey windows. This will be during Term 1 for the first survey and Term 3/4 for the optional second survey. The survey will take 15 to 20 minutes on average and no more than 30 minutes for most students.

Schools will need to make school computers available for students to complete the survey. Schools will be provided with information and consent forms for distribution to parents. For the Term 1 survey, schools will be provided with unique student usernames and passwords prior to the start of the survey.

To protect student confidentiality, data suppression rules are applied to the school reporting tools where sample sizes are too small.

11. Will support be available to schools during the survey period?

Schools will have access to technical support provided by *The Learning Bar*, the company that has been contracted to supply the surveys for the department. A free-call telephone number and email address will be provided to participating schools. Support will be available every day during term time between 8.30am and 4.30pm, before, during and after active survey periods.



12. Will training be available to school coordinators?

Online live training and information webinars will be offered to all schools. All school coordinators and principals are encouraged to attend one of these training sessions prior to the survey window. There will also be additional webinars offered during and at the end of the survey period providing information about how to interpret the reports and analyse the data provided by the surveys. Recordings of the training webinars are available in the *Tell Them From Me* online portal in the 'Knowledge Base' tab of the 'My Resources' folder.

13. Can I see the survey questions?

Schools will be able to view the surveys online via a password protected portal once they have formally committed to undertaking the surveys. The survey questions are available in PDF form for participating schools. Please note that the survey questions are the intellectual property of *The Learning Bar* and must not be distributed beyond your school or used in any manner other than that stipulated by the department.

14. Can I ask my own questions?

Yes. Schools will be able to include customised questions in closed and open-ended format for the optional second student survey. Individual responses to the open-ended questions will not be passed on to CESE researchers.

15. How does the TTFM student survey relate to the teacher and parent surveys?

CESE is offering the full suite of *Tell Them From Me* surveys (student, parent and teacher surveys) to ensure schools can capture the views of students, teachers and parents. The surveys are complementary.

For more detail on each of the surveys, see the survey website: <http://surveys.cese.nsw.gov.au/>

16. Will the surveys all take place at the same time?

The student surveys will take place in the second half of Term 1 and (optionally) Term 3/4. The parent and teacher surveys will take place at the same time as the second student survey in Term 3/4.

17. Can our school do one of the surveys and not the others?

Schools can take part in the Term 1 student survey without taking part in either the teacher or parent surveys, or the Term 3/4 student survey. However, we ask that schools commit to do the Term 1 student survey to be able to run the parent and/or teacher survey, or the Term 3/4 student survey. Some exceptions do apply to schools in special circumstances, such as infants schools or schools for specific purposes (SSP schools).

18. Has the survey been used in Australia before?

To date, over 1,600 Australian schools (more than 500,000 students) have used the *Tell Them From Me* student survey. Most of these are government secondary and primary schools in NSW. *Tell Them From Me* is also used by schools in Victoria, Queensland and Western Australia.

19. My school is small. Will the survey work for me?

To protect student confidentiality, data suppression rules do apply where fewer than five students answer a question. This may limit the capacity of small schools to drill down into their data. For details on ways that data suppression may affect reports in your school's specific context, please contact support@thelearningbar.com.

Small schools can choose to cluster together, allowing them to pool data. Clustering is completely optional. To form a cluster, all schools involved must agree. If schools form a cluster this will mean that these schools receive a report that shows the combined data from all the schools in that particular cluster. These schools will also receive their individual school report if enough data has been collected to protect student confidentiality.

Please indicate whether you would like to be part of a school cluster when lodging your expression of interest.

20. Can infants schools, SSP schools or other schools with special circumstances participate?

The student survey is only suitable for students in Years 4 to 12. It cannot be changed for students in special circumstances. However, infants schools, SSP schools and other schools in special circumstances may do the parent and/or teacher surveys without doing the student survey.

21. What provisions are made for students with low literacy?

The department has some advice relating to text-to-voice technology available on the *Tell Them From Me* online portal in the 'My Resources' folder.

22. Who will be able to see my school's data?

Schools will be able to see their own aggregated data. They will not see individual student responses.

CESE researchers will have access to student level data for system wide analysis. The researchers are interested in trends only, not individual student responses. CESE will not be able to see responses to your school's open-ended custom questions. No student will be identified in any publication. No school will be identified unless they have given permission.

As with other departmental data, your Director, Public Schools and selected policy staff from state office may view your school's report.

Schools are encouraged to use the data as part of their ongoing community and stakeholder discussion.

23. What will happen next for schools that choose to participate in the student survey?

Early Term 1	Schools provided with information and consent forms for parents, at: http://surveys.cese.nsw.gov.au/information-for-parents . Training for school principals and coordinators in using the survey website conducted via webinar. Schools provided with student log-ins and passwords.
Mid-Term 1 – end of Term 1	Active period for surveys. Helpdesk support will be available. Schools receive reports three days after closing their survey.
Early Term 2	Training for school principals and coordinators in analysing school survey results conducted by webinar.
Mid-Term 3 – beginning of Term 4	Active period for optional teacher, parent and second student surveys. Helpdesk support will be available. Training for school principals and coordinators in using the survey website conducted via webinar. Schools receive reports three days after closing their survey. Training for school principals and coordinators in analysing school survey results conducted by webinar.



What is CESE?

The Centre for Education Statistics and Evaluation (CESE) is part of the NSW Department of Education.

CESE has been established to improve the effectiveness, efficiency and accountability of education in New South Wales. CESE identifies and shares what works, creating new opportunities to improve teaching and learning across all of education.

More information about CESE is available at: www.cese.nsw.gov.au

What is *The Learning Bar*?

The Learning Bar specialises in research-based design and facilitation of student assessments and survey solutions for both primary and secondary students. The in-house research team led by the President, Dr J Douglas Willms, undertakes extensive projects used in the school system to affect national policy. It is against this research that the survey, *Tell Them From Me*, has become the largest national school survey in Canada, used in nine of the ten provinces. Globally, more than 6,300 schools and 5.4 million students have participated in the survey over the last twelve years.

Dr Willms recently held the Tier 1 Canada Research Chair in Literacy and Human Development. He plays a lead role in the development of questions on student engagement for the OECD's Programme for International Student Assessment (PISA).

For purely administrative purposes, *The Learning Bar* will also have temporary access to identifiable student responses to the survey questions. Other than *The Learning Bar* and CESE researchers within the department, identifiable student responses will not be disclosed to any other person or body other than as required by law.

More information about *The Learning Bar* is available at: www.thelearningbar.com

If you have any questions about the student survey, please contact CESE via email: TTFM@det.nsw.edu.au or by telephone: **1300 131 499**.



All Abilities Focus

Learn Today - Hope for Tomorrow

INTELLECTUAL DISABILITY FORUM 2018

**Hear from people with intellectual disability
about their experiences using NDIS funding.**

AUGUST 23, 2018

11:30AM – 3:30PM

**VINEGAR HILL MEMORIAL COMMUNITY
CENTRE**

**ROUSE HILL TOWN CENTRE
29 Main Street, Rouse Hill**

For more information please contact:

Sonal Chatrath- 0488 682 312

schatrath@ssi.org.au

**Intellectual Disability
Forum aims to build your
knowledge and capacity
by engaging with local
intellectual disability
service providers.**

**Come along to this FREE
COMMUNITY EVENT, check
out information stalls from:**

- At The Corner
- Speech Therapists
- Occupational Therapists
- Ability Links NSW
- National Disability
Coordination Officer
- Hireup
- Learning Links

....

AND MANY MORE!

Listen to presentations by:

- NSW Fair Trading
- Uniting- Local Area
Coordinators
- Side By Side Advocacy
Service
- Council for Intellectual
Disability

...

AND MANY MORE!

**All our events are inclusive
and everyone is welcome to
attend. For any adjustments
or inquiries please contact
Sonal.**

SUPPORTED BY
THE HILLS
Sydney's Garden Shire


National Disability Coordination Officer Program
AN AUSTRALIAN GOVERNMENT INITIATIVE


AT THE CORNER
your navigator


NSW
GOVERNMENT


**ABILITY
LINKS**
NEW SOUTH WALES


**ABILITY
LINKS**
NEW SOUTH WALES


SSI
settlementservices
international

SATURDAY 25 AUGUST 2018

BLACKTOWN LEISURE CENTRE STANHOPE 12PM - 4PM

BLACKTOWN CITY

FAMILY

SPORTSFEST



GIVE-AWAYS



SPORTS CLINICS



COMPETITIONS



INTERACTIVE DISPLAYS

FREE ENTRY TO THE WHOLE CENTRE FROM 12PM

BLACKTOWN LEISURE CENTRE STANHOPE

Sentry Drive, Stanhope Gardens, 2768

Phone: 9421 2600

www.blacktown.nsw.gov.au/sportsfest



BLACKTOWN
KEYVENUES

